

## INTEGRATED PERIMETER SECURITY SOLUTIONS PROVIDER

A-1 Fence was established in 1998 and has expanded globally into five countries, with six manufacturing facilities across Saudi Arabia, the UAE, Oman, India, and the USA. Over the years, we have transformed from a fence manufacturer into a Comprehensive Perimeter Security Solutions provider by integrating perimeter security products with intrusion detection systems.



For any product queries, you can reach directly at

+966 54 824 8509 sales@alfence.sa

**A-1 Fence Arabia** | Office 103, Said Business center 2, Prince Faisal Bin Fahd Road,  
Al Bandariyah, Al Khobar 34424, Saudi Arabia



We are here to assist you!  
We would like to hear about your problems/grievances with anything so we can improve!  
Email us at [customerservice@alfenceproducts.com](mailto:customerservice@alfenceproducts.com)



[www.a-1fencearabia.com.sa](http://www.a-1fencearabia.com.sa)

ايه-ون فينس العربية  
**A-1 FENCE ARABIA**



## About A-1 Fence Arabia

### Integrated Perimeter Security Solutions

Welcome to A-1 Fence Arabia, a leading company in perimeter security solutions. We have a strong history of over 25 years specializing in high-security solutions that comply with HCIS standards in Saudi Arabia.

Our core mission at A-1 Fence Arabia is to protect assets, borders, and people worldwide. We offer complete end-to-end solutions, from initial site assessment to installation and commissioning.

We provide three main categories of solutions:

- ▶ Perimeter Security Solutions
- ▶ Entrance Control Systems
- ▶ Perimeter Intrusion Detection Systems

Our impressive portfolio includes collaborations with prominent organizations such as Aramco, SEC, SWCC, Sadara, Ma'aden, and Mawani. Over the past two decades, we have worked closely with various government ministries, road transport authorities, oil and gas companies, power industries, public infrastructure agencies, the Ministry of Defence, airports, seaports, EPC contractors, real estate developers, architects, and consultants

**A-1 Fence Arabia**, where innovation finds its home, and security meets excellence.



#### Our Vision

**10x** growth through entrepreneurial spirit, global connect and passion for excellence.

## Why choose us?

### HCIS Compliant Products

Being HCIS compliant is a testament to our commitment to strict industry regulations. This assurance means our products meet the **highest security and safety standards**.

### Selling to Caring

Our commitment goes beyond just selling high-quality fencing solutions. We prioritize **caring for our customers by providing comprehensive support** throughout the entire project lifecycle. Our holistic approach ensures that every aspect of your project is handled with the utmost attention and expertise.

### In Kingdom Manufactured Products

Our **local manufacturing facility** is at the heart of our dedication to quality. We create solutions that not only meet the highest standards but also perfectly suit our clients and the region's unique needs.

### Comprehensive Security Solutions

Our dedication to complete security solutions goes beyond the norm. By adopting this approach, **we empower our clients to confidently face the future**, knowing their security needs are not just met but exceeded.





# INDEX

02 | About A-1 Fence Arabia

03 | Why choose us?

06 | **Perimeter Security Solutions**

08 | Anti-Personnel Rigid Weldmesh Fence

10 | Crash Rated Anti-Vehicle Rope Barrier

12 | Combined Fence for Class 1

14 | Chainlink Fence

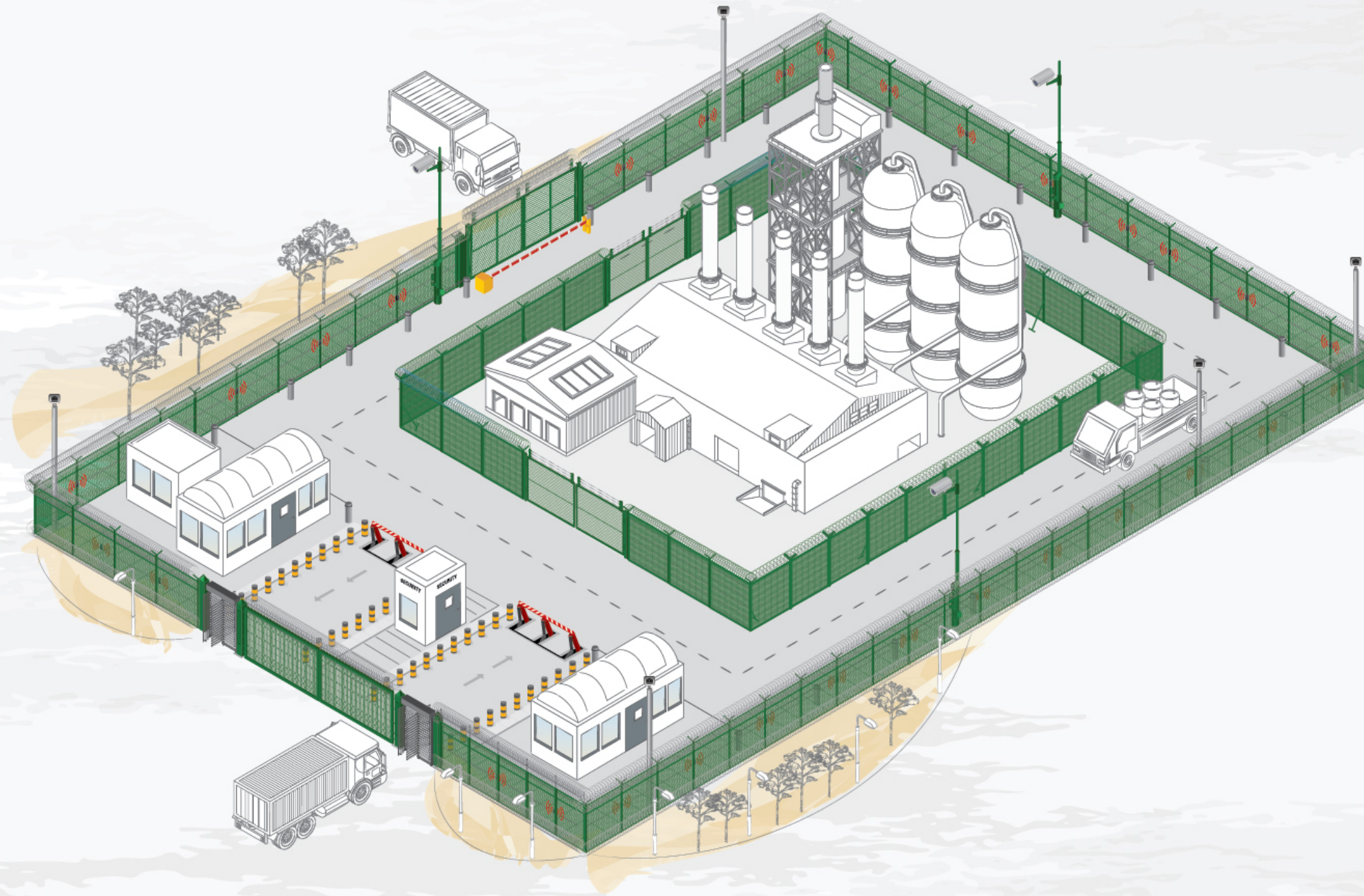
16 | Anti drone fence

18 | **Entrance Control Systems**

20 | Crash Rated Hydraulic Roadblocker – NEO

22 | Crash Rated Hydraulic Roadblocker – NEO XL

24 | Crash Rated Fixed Bollards



26 | Crash Rated Arm Barrier

28 | Bulletproof Door

30 | Bulletproof Window

32 | Gates

34 | **Perimeter Intrusion Detection System (PIDS)**

36 | Liminal-K (Vibration Sensor)

38 | Tilt Camera Pole

40 | Fixed Poles

42 | **Comprehensive Perimeter Security Solutions**

44 | Project Gallery

46 | Esteemed Approvals

47 | Honorable Clientele



# PERIMETER SECURITY SOLUTIONS

CLASS I

These fencing systems are used at facilities where the highest level of security is required with a Facility Security Classification of Class 1 - Anti Personnel Rigid Weldmesh Fence (APF) + Anti Vehicle Barrier (AVB)

CLASS II

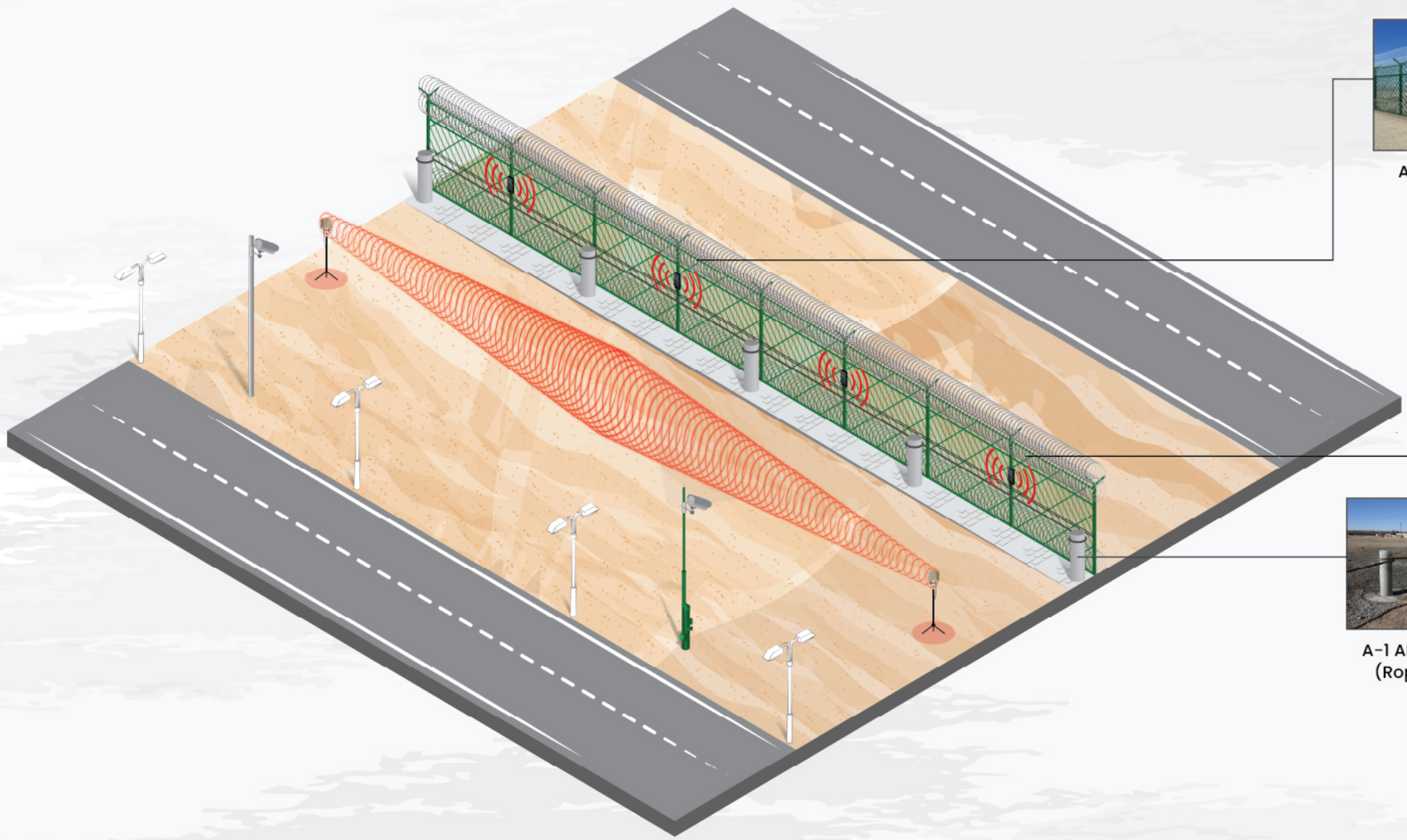
Anti Personnel Rigid Weldmesh Fence is used at facilities with a Facility Security Classification of Class 2 where a high level of security is required

CLASS III

Chainlink Fence + 2 rows of Concertina Coils make up for the requirement of medium level security with a Facility Security Classification of Class 3

CLASS IV

Chainlink Fence + 1 row of Concertina Coil make up for the requirement of medium level security with a Facility Security Classification of Class 4



A-1 Akat NG 30



Chainlink Fence



A-1 Alcazar AVRB  
(Rope Barrier)



# CLASS II SOLUTION

Anti-Personnel Rigid Weldmesh Fence

## A-1 AKAT NG 30

**A-1 AKAT NG 30** is a cutting edge **rigid weld mesh system** designed to reinforce perimeters with the utmost priority on safety. It offers a delay time of **6.4 minutes** (aggressive threat level), surpassing the **HCIS 2017 Sec 02 Directive** requirement of 5 minutes, and a delay of **31.7 minutes** (moderate threat level). With an excellent **VISIBILITY INDEX** (see-through ability), **A-1 AKAT NG 30** remains a popular choice across the Kingdom.



HCIS Compliant Category 2 Fencing System

### FEATURES

#### DELAY TIME

Designed to offer a delay time of 6.4 minutes against aggressive cutting tools and a delay time of 31 minutes against medium cutting tools



#### EXCELLENT VISIBILITY INDEX

Enabling security patrols and perimeter monitoring and assessment systems to have a clear field of view



#### LONG LIFE

Superior coating that guarantees corrosion resistance enabling long life



#### HIGH DETERRENCE

Additional topping of Concertina coils and wall spikes for further fortification



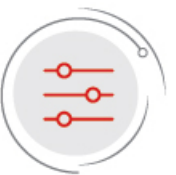
#### INSTALLATION SUPPORT

Expert end-to-end installation and AMC support



#### CUSTOMIZATION

Enabling customization to mitigate the installation complexities, while being mindful of the security requirements and environment conditions





# A-1 ALCAZAR AVRБ

Crash Rated Anti-Vehicle Rope Barrier

A-1 Fence Arabia takes pride in offering **Anti-Vehicle Rope Barrier** that is tested to offer a high level of protection against hostile vehicles. Capable of stopping an oncoming vehicle weighing up to **6.8 tons**, travelling at a speed of 50 mph within a penetration **distance of 1m**, A-1 Alcazar Anti-Vehicle Rope Barrier is **HCIS Compliant** with the Crash rating of **ASTM F-2656 M50 P1**.



Certified with ASTM F2656 M50 P1



## FEATURES

### SINGLE-ROPE DESIGN

A-1's Single Rope Design simplifies installation, reducing complexity and enhancing system performance. It evenly distributes impact load, with clamping every six meters for stability and sag resistance.



### TERMINATION EVERY 30 METERS

The barrier is terminated every 30 meters, evenly distributing horizontal impact loads across posts every 6 meters. This design ensures controlled installation and simplifies maintenance, requiring replacement only for the affected section in case of accidents.



### COMBINED FOUNDATION

Both posts are situated close to each other with AVB posts placed at 6m intervals and APF posts at 3m intervals and where they align, a common foundation is made for optimizing time and reducing costs.



### FLEXIBLE DEPLOYMENT

The rope-type design enables seamless installation around corners & steps without on-site customization or added costs. The Anti-Vehicle Rope Barrier (AVRB) offers robust security with easy installation.






# CLASS I SOLUTION

Combined Fence

The **Class I solution** comprises of an Anti-Personnel Fence (**A-1 Akat NG 30**) + Anti-Vehicle Barrier (**A-1 Alcazar Anti Vehicle Rope Barrier**)


**A-1 AKAT NG 30** is a rigid weld mesh Anti-Personnel Delay Rated Fence, designed to provide a strong barrier against unauthorized access. Fully compliant to **HCIS 2017 Sec 02 Directive**, this state of the art solution provides unparalleled intrusion protection for critical installations and high risk environment adhering to **ASTM F2781-15** standard.

 Certified with ASTM F2781-15



HCIS Compliant Category 1 Fencing System

**A-1 Alcazar Anti-Vehicle Barrier** is a crash rated robust solution engineered to deter unauthorized vehicle access by providing a formidable defense against potential threats, ensuring the safety and protection of your premises.

 Certified with ASTM F2656 M50 P1

**USP:**

Both APF and AVB posts are situated close to each other with AVB posts placed at 6m intervals and APF posts at 3m intervals and where they align, a common foundation is made, optimizing time and reducing costs.



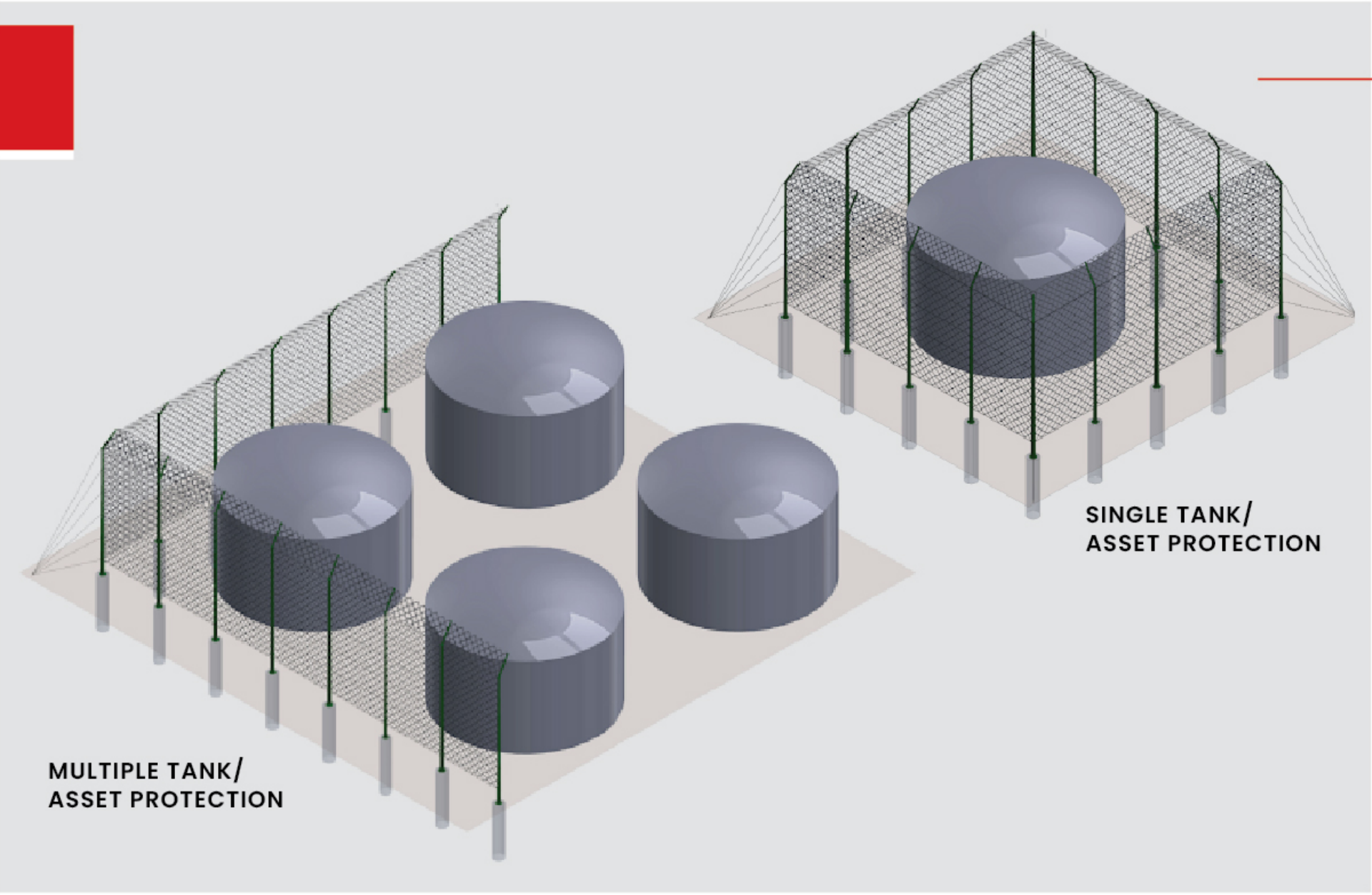
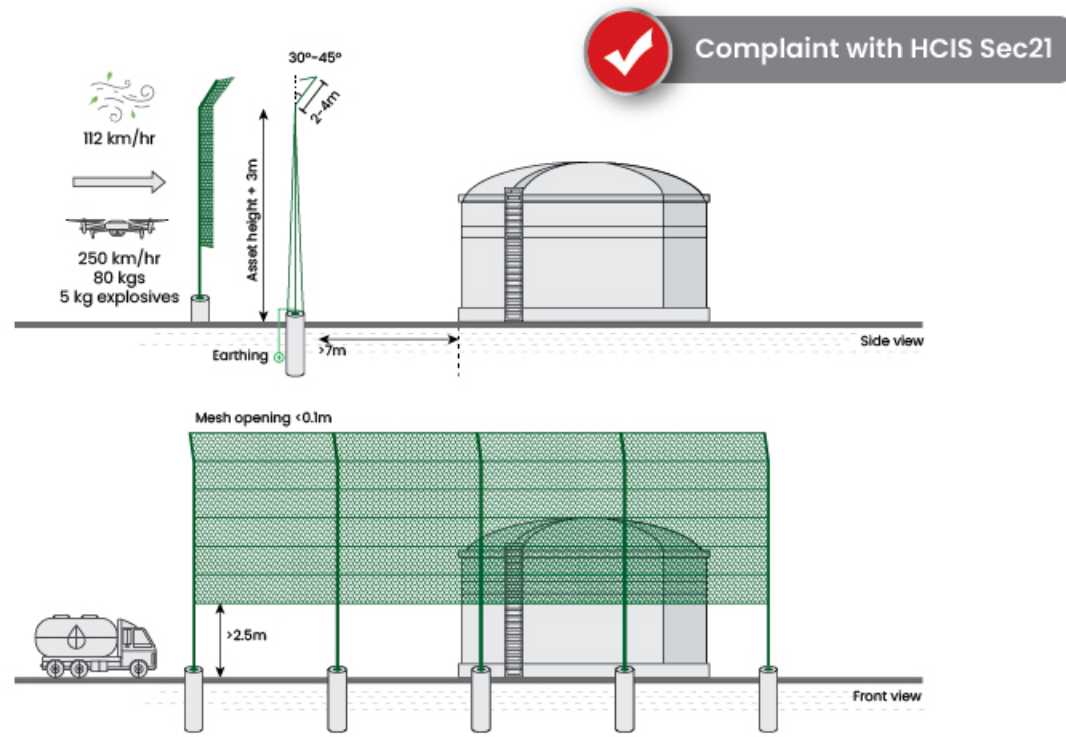




# ANTI DRONE FENCE

Passive defense measures against drone attacks

In today's world, drone attacks have become increasingly common and pose a serious threat to critical assets, especially those of an explosive nature. While main facilities may have robust security systems, it's essential to safeguard vital assets like tanks, transformers, and battery energy storage systems with **anti-drone fences**. These fences intercept drones several meters before they reach the asset, effectively preventing or minimizing potential damage.



## FEATURES

### HIGH TENSILE WOVEN MESH

Made from 1500 MPA tensile strength wires, the mesh can stop drones weighing up to 80 kg, traveling at 250 km/hr, and carrying 5 kg of explosives.



### ROBUST POLE DESIGN

Designed for resilience, poles stand 3 meters taller than the asset, extend 3 meters inward at an angle, and feature a polygonal tapering shape with a strong, structurally calculated foundation.



### EXPLOSION IMPACT MITIGATION

Installed 7 meters away from the asset, the fence minimizes the impact of potential explosions.



### CORROSION-RESISTANT DURABILITY

All components are hot-dip galvanized, ensuring long-lasting performance even in corrosive environments.



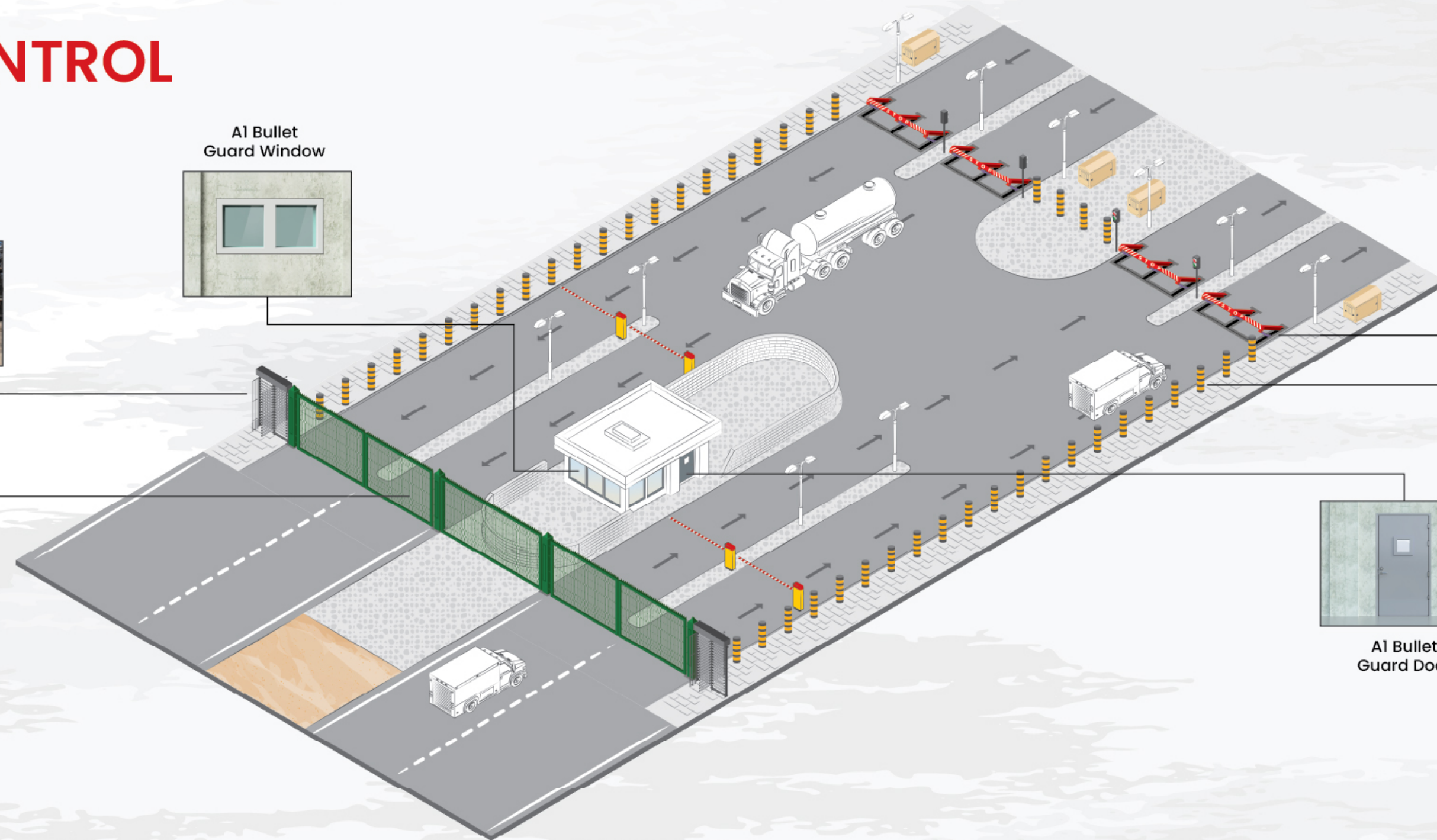
### OPTIMIZED MAINTENANCE & STRUCTURAL SAFETY

The mesh starts at 2.5 meters above ground for easy maintenance access, while external guide wires ensure any structural failure directs the fence outward, away from the asset.





# ENTRANCE CONTROL SYSTEMS



Our range of entrance control solutions include:

- ▶ Sliding Gate
- ▶ Swing Gate
- ▶ Manual Gate
- ▶ Turnstile Gate
- ▶ Motorized Gate
- ▶ Auxiliary Gate
- ▶ Emergency Gate
- ▶ A1 Bullet Guard Door
- ▶ Roadblocker
- ▶ Bollards
- ▶ Crash Rated Arm Barrier
- ▶ A1 Bullet Guard Window




# A-1 ALCAZAR HRB – NEO


Crash Rated Hydraulic Roadblocker – Neo

The **A-1 Alcazar HRB-Neo** is a top-notch high-security system that aids **Hostile Vehicle Mitigation**. It is installed at the entrance of industrial and high-security sites for ultimate protection. This innovative **HCIS Compliant Road Blocker** can halt any unauthorized vehicle **within 1 meter** of impact by rising in **less than 1.5 seconds!**


 CERTIFIED with ASTM F-2656 M50 P1



Weight upto  
**≥6.8 tons**



Speed upto  
**50 mph**




Penetration  
**<1 Mtr**





Compliant: HCIS 2017 Directive


## FEATURES

- UNIQUE THREE FINGER DESIGN**  
Does not require any tracks, springs, pulleys and is completely secured from tampering


- NO AXLE LOAD LIMIT**  
Any load exerted by the vehicles passing over the road blocker is sustained by disbursing it into the concrete foundation


- SHALLOW FOUNDATION**  
Requires less civil work which in turn leads to cost saving


- SAFETY LOOP DETECTOR | 2 LOOPS**  
Protects the vehicles passing on top of the impact plate to avoid crash accidents



|                         |               |
|-------------------------|---------------|
| Secured Position Height | > 90cm        |
| Foundation Depth        | 12"           |
| E-Up Operation          | <1.5 seconds  |
| Operating Temperature   | -40°C to 77°C |
| Standard Operating Time | 3-5 seconds   |



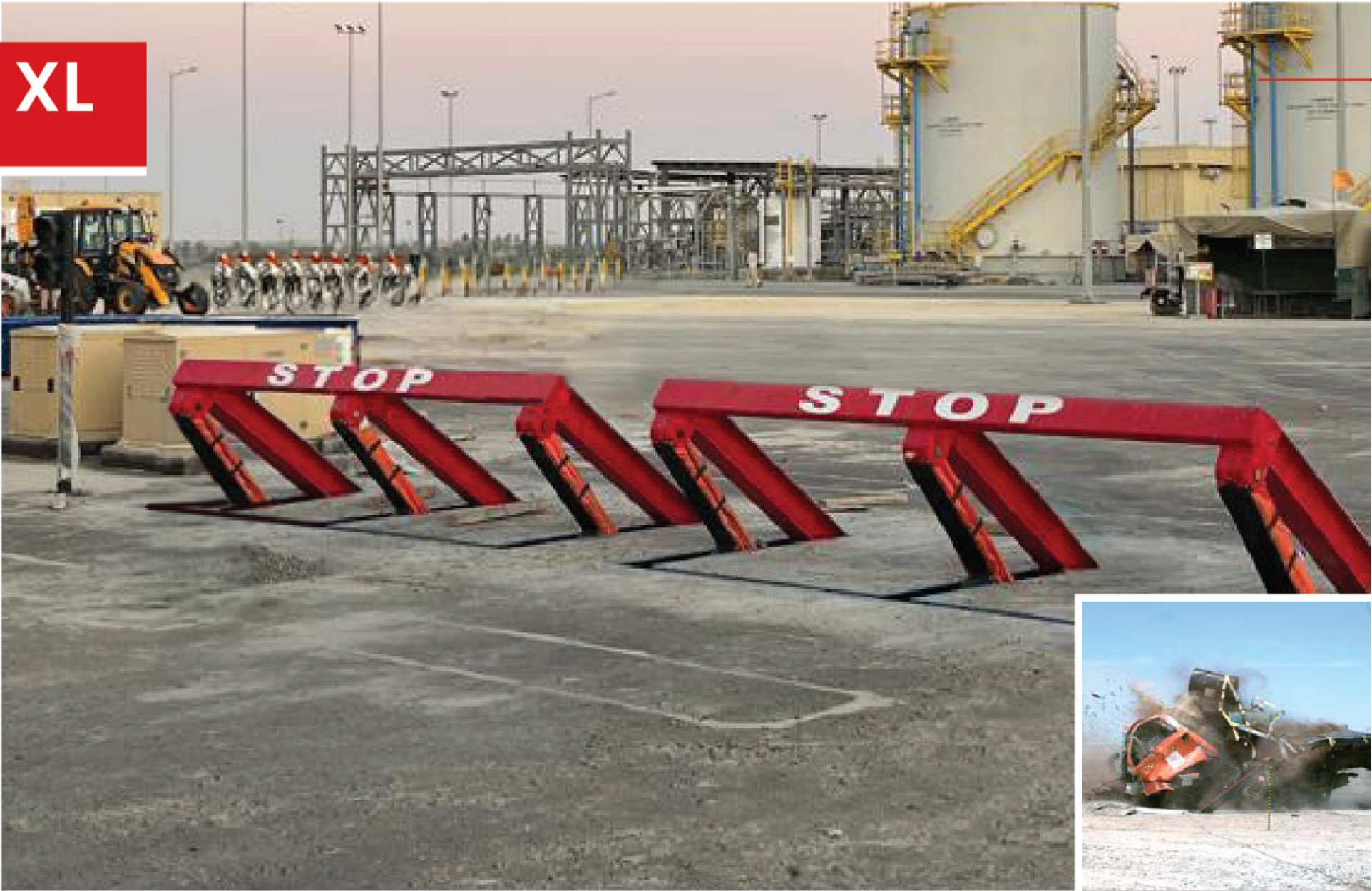
# A-1 ALCAZAR HRB – NEO XL

Crash Rated Hydraulic Roadblocker – Neo XL

The **A-1 Alcazar HRB NEO XL** is an advanced road blocker solution designed for road widths between 6m and 10m. It **features two blocker units** that operate synchronously as a single system, ensuring seamless and reliable performance. Retaining all the functionalities of the **HRB NEO** variant for roads under 6m, the XL version is fully **HCIS compliant**. It also offers the flexibility of choosing between a single or dual hydraulic power unit, both controlled through a common control system for efficient operation.



CERTIFIED with ASTM F-2656 M50 P1



## FEATURES

### EXTENDED ROAD COVERAGE

Designed specifically for roads wider than 6m and up to 10m, providing robust security for larger entry points



### SYNCHRONIZED POWER SYSTEM

Available with an option of a single or dual hydraulic power unit, ensuring smooth, synchronized operation based on site requirements



### RETAINS HRB NEO FEATURES

Incorporates all the proven features and performance benefits of HRB NEO, making it a seamless upgrade for wider road applications



|                         |               |
|-------------------------|---------------|
| Secured Position Height | > 90cm        |
| Foundation Depth        | 12"           |
| E-Up Operation          | <1.5 seconds  |
| Operating Temperature   | -40°C to 77°C |
| Standard Operating Time | 3-5 seconds   |





# A-1 ALCAZAR SB


Crash Rated Fixed Bollards

Engineered to offer exceptional protection against vehicular threats with a crash rating of **ASTM F2656 M50 P1**, **A-1 Alcazar SB** provides utmost confidence and assurance in perimeter security. It promotes shallow foundation that requires **less civil work** while boasting the **highest spacing distance** between two bollards.

 CERTIFIED with ASTM F-2656 M50 P1

  
Weight upto  
**≥6.8 tons**

  
Speed upto  
**50 mph**

  
Penetration  
**<1 Mtr**



Compliant: HCIS 2017 Directive

## FEATURES

**SUPERIOR IMPACT RESISTANCE**  
Capable of stopping an oncoming vehicle ≥6.8



**LESS FOUNDATION DEPTH**  
Requires less civil work which in turn leads to cost saving making installation simpler



**PROTECTION AGAINST CORROSION**  
Ensuring longevity and reliability even in the harshest environments



**SEAMLESS INSTALLATION CUSTOMIZATION**  
Simplifying the installation process for a hassle-free solution



**COLOR CUSTOMIZATION**  
Striking the perfect balance between security and architectural elegance





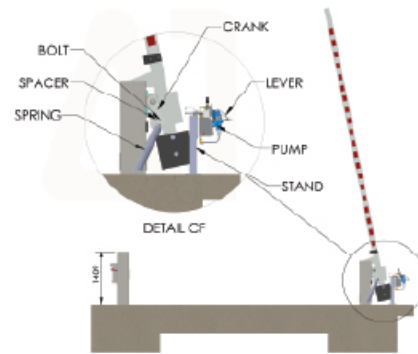
# A-1 ALCAZAR CBB

## Crash Rated Arm Barrier

**A-1 Alcazar Crash Beam Barrier** is a heavy-duty **drop arm barrier** that serves the purpose to control and restrict access to secure areas, providing a strong physical barrier that prevents unauthorized entry. With a crash rating of **ASTM F2656 M50 P1** the imposing presence of the **crash beam barrier** acts as a physical deterrent and forms a critical component of a comprehensive security system.



Certified with ASTM F-2656 M50 P1



A-1 Alcazar  
Crash Beam Barrier



## FEATURES

### ROBUST DESIGN

Designed to withstand heavy impact the CBB can be operated manually with ease using a removable handle, even with infrequent use. It includes a secure lock in both open and closed positions



### WIDEST CLEAR OPENING

20 feet clear opening which is amongst the widest tested crash beam barrier in the market for ASTM F 2656 M50 P1 rating



### QUICK INSTALLATION

Simple foundation design and easy installation steps makes installation at site very quick, saving time and money



### LONG LIFE

Hot dip galvanization after fabrication followed by powder coating or thermoplastic coating, gives it a very long life even in saline or corrosive environments



### AUTOMATED OPTION

Can be seamlessly upgraded to have an automated operation using either hydraulic or electric power without any change in design



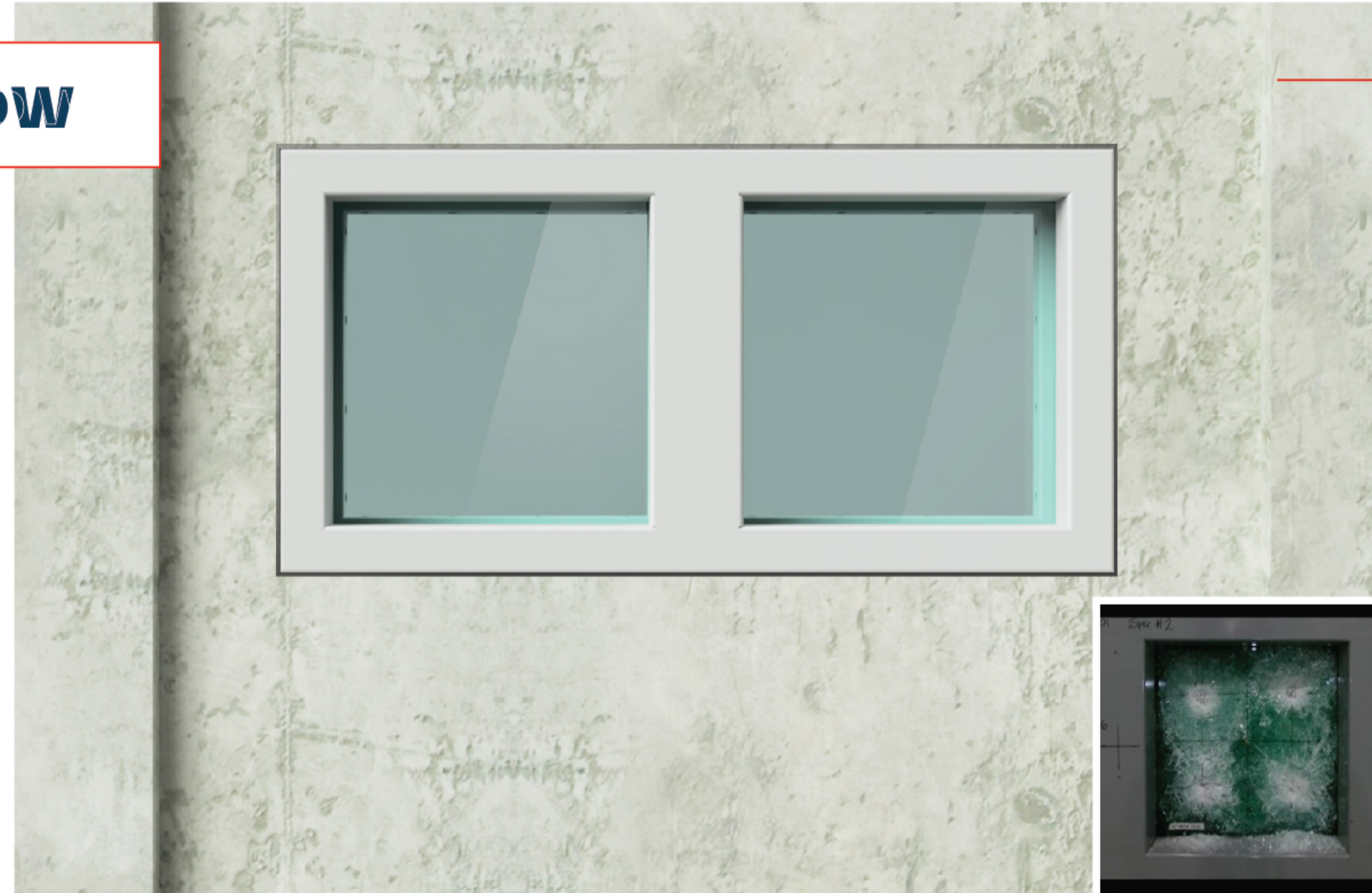


# A1 BULLET GUARD WINDOW

The **A1 Bullet Guard Window** is a perfect fusion of transparency and protection, offering **advanced ballistic resistance** with an elegant design. Certified to meet **NIJ 0108.01 Level III** standards, this cutting-edge window can **withstand high-velocity rifle rounds** while maintaining excellent optical clarity. Designed for durability and efficiency, it redefines what it means to see security in action.



NIJ 0108.01 Level III



## FEATURES

### ADVANCED BALLISTIC PROTECTION

Tested and certified to stop 7.62mm AK-47/NATO rounds, the A1 Bullet Guard Window provides an unmatched defense against ballistic threats.



### CRYSTAL-CLEAR VISIBILITY

Designed with precision-engineered, bulletproof materials, the window offers unparalleled optical clarity without distortion, ensuring safety with full visibility.



### DURABLE, MULTI-LAYERED CONSTRUCTION

The window's advanced composition includes layers of polycarbonate, laminated glass, and reinforced materials to absorb and disperse ballistic impacts effectively.



### CUSTOMIZABLE SIZES AND SHAPES

Tailored to meet your architectural needs, the A1 Bullet Guard Window can be customized for unique shapes and dimensions.



### OLEOPHOBIC COATING FOR EASY MAINTENANCE

A specialized oleophobic coating prevents fingerprints, smudges, and grime buildup, keeping the glass clean and clear with minimal maintenance.



### UV POLARIZING LAYER FOR PROTECTION

The integrated UV-polarizing layer reduces exposure to harmful UV rays, protecting interiors and ensuring long-term material durability.





# A1 BULLET GUARD DOOR

When security is non-negotiable, the **A1 Bullet Guard Door** stands as an unyielding barrier **against ballistic threats**. Designed for high-risk industrial applications, this advanced security door combines **impenetrable strength** with **precision engineering** to withstand the toughest conditions. Built for environments where protection is paramount, it delivers unparalleled security while maintaining efficient functionality.



## FEATURES

### ADVANCED BALLISTIC PROTECTION

Certified to meet Ballistic NIJ 0108.01 Level III standards, the A1 Bullet Guard Door is engineered to stop 7.62mm AK-47/NATO rounds, providing unmatched safety in high-security environments.



### LOW GROUND CLEARANCE

Precision-engineered for a perfect seal, the A1 Bullet Guard Door prevents unwanted airflow, ensuring maximum insulation.



### WIDE VISION PANEL

Stay aware without sacrificing safety. The optional bulletproof glass vision panel offers maximum visibility while maintaining full ballistic protection.



### SLIM DOOR PANEL

A space-efficient, sleek design ensures the door fits effortlessly into industrial and high-security spaces while maintaining its strength and durability.



### LIGHTWEIGHT CONSTRUCTION

The lightweight yet robust construction ensures easy operation while maintaining its superior ballistic integrity.



### HIGH-PERFORMANCE INSULATION

Built with an inner layer of Rockwool, the A1 Bullet Guard Door provides exceptional heat resistance for temperature control and effective noise reduction, ensuring a secure and quiet environment.

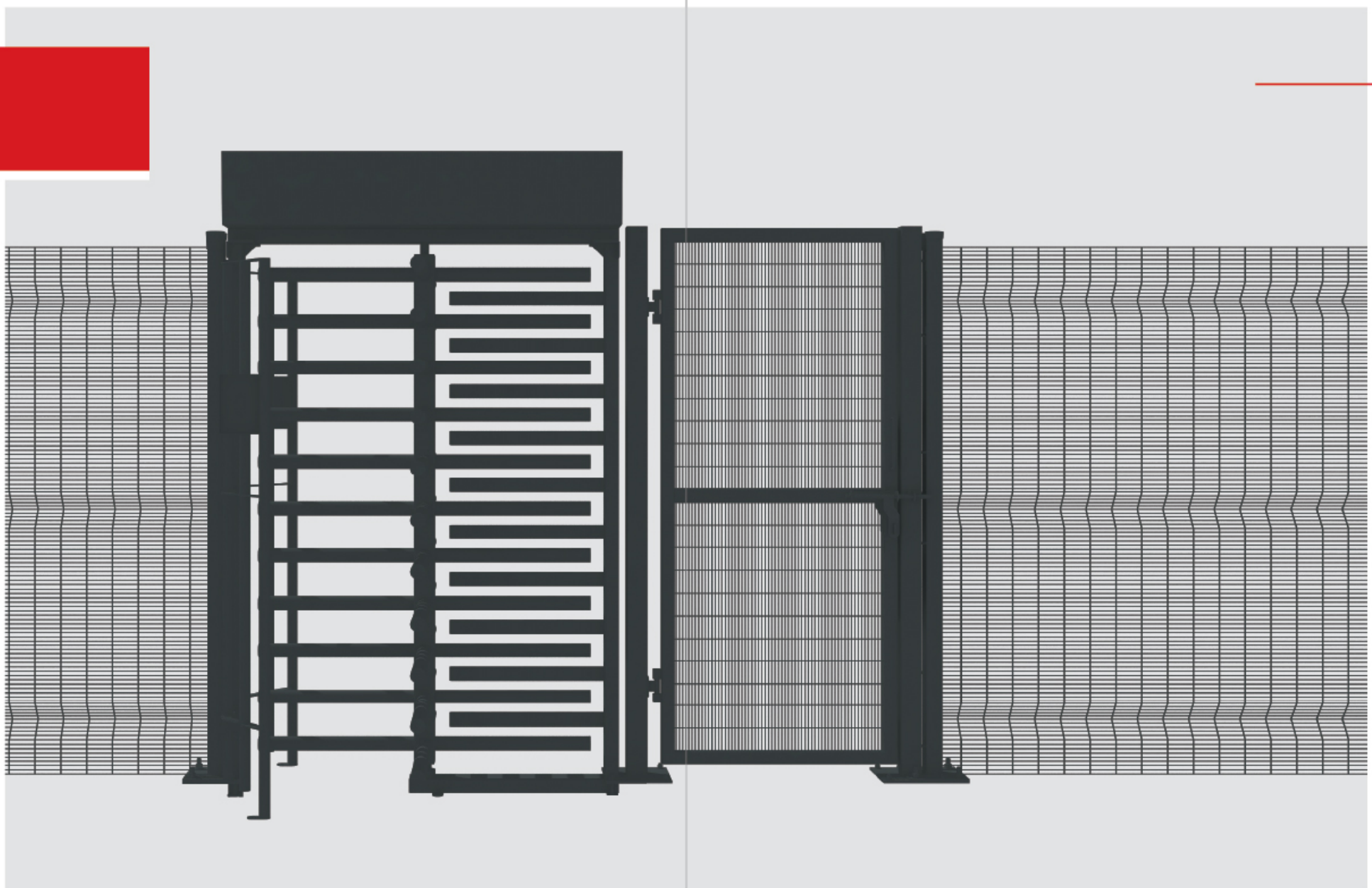




# TURNSTILE GATE

A-1 Fence Arabia introduces high-quality **HCIS Compliant Turnstile Gates** that are designed to offer secure and efficient access control for a variety of environments. Our **Turnstile Gates** are engineered to combine robust security features with **user-friendly operation**. Built with durable materials to withstand harsh environmental conditions, they ensure **long-term reliability** and **minimal maintenance**. Our **turnstiles** offer a practical solution for enhancing security infrastructure, **delivering dependable performance** backed by our extensive experience in perimeter security.

 Mechanism Tested For 500,000 Cycles



## FEATURES

### SMOOTH & SAFE OPERATION

A-1 turnstiles feature hydraulic damping mechanisms for smooth, safe, and quiet operation, enhancing user experience and safety



### SEAMLESS INTEGRATION

Easily integrates with various access control systems such as card readers, biometric scanners, and facial recognition technology



### EASY INSTALLATION

Modular mechanism design allows for quick installation, minimizing downtime and operational disruption



### MANUAL OVERRIDE

Equipped with a manual override key switch, each turnstile can be set for entry, exit, or free rotation for flexible access control



### LOW MAINTENANCE

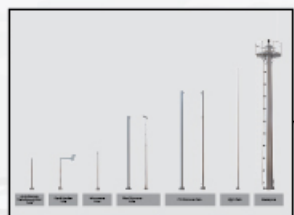
Designed with high-quality accessories for reduced maintenance needs, ensuring long-term reliability and cost-effectiveness



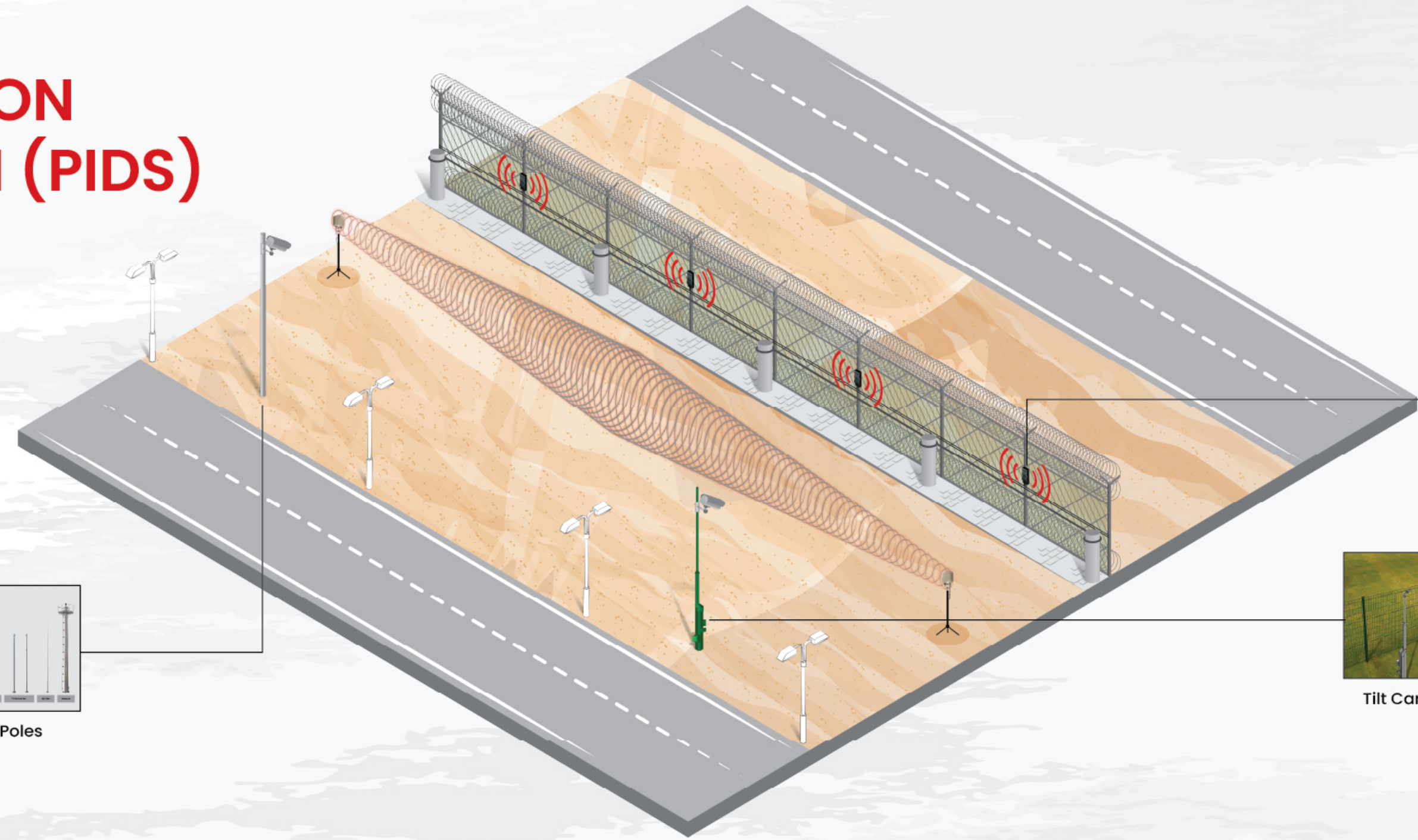


# PERIMETER INTRUSION DETECTION SYSTEM (PIDS)

PIDS is an **advance warning system** to avoid intrusion attempts. Both the PIDS and the perimeter fence works in **unison** - the physical fence provides delay and **deterrence**, while the PIDS system provides **detection**, making it a truly integrated perimeter security system.



Fixed Poles



Liminal-K



Tilt Camera Pole

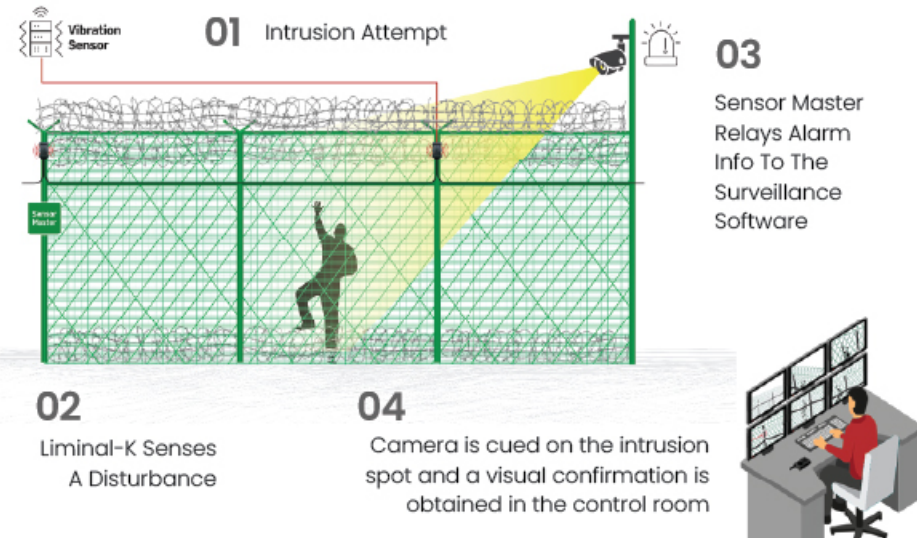


# LIMINAL-K (VIBRATION SENSOR)

**Liminal-K** is a MEMS (Micro Electro Mechanical Sensor) based sensor that detects intrusions on fences or walls. It provides **pinpoint intrusion detection**.

Demonstrates **redundancy** at all stages, including sensor level, control panel level, and network level.

## WORKING



## FEATURES

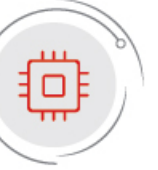
### HIGH DETECTION ACCURACY & LOW NOISE ALARMS

±6m precision with configurable zones. Pole-mounted sensors reduce vibrations, minimizing false alarms, with adjustable sensitivity every 6m



### ADVANCED REDUNDANCY

Ensures continuous security with overlapping sensor coverage, communication cable cut protection, and Forward Error Correction (FEC) panel backup for power, controller, or network failures.



### OPTIMIZED MEMS TECHNOLOGY & EASY INSTALLATION

Uses Micro-Electro-Mechanical Sensors (MEMS) for Rigid Weldmesh. Installs quickly with outdoor-rated cable ties—no special tools required



### SINGLE SENSOR FOR COMPLETE COVERAGE

Detects disturbances in both the concertina coil, fence post & panel, eliminating the need for a separate concertina detection system



### COST-EFFECTIVE & SEAMLESS INTEGRATION

Controllers can be spaced up to 450m apart, reducing infrastructure costs. No dedicated software needed—directly integrates with leading Video Management Systems like Genetec, Milestone, Guetebrug and many more





# TILT CAMERA POLE

A highly advanced **camera support solution** which utilizes a unique tilting mechanism to eliminate the need for climbing the pole during maintenance.

 CERTIFIED with ANSI/TIA-222G-2005



## FEATURES

### IMPROVED SAFETY

Tilt Camera pole greatly reduces safety hazards as it eliminates the need of working at height and also prevents accidents due to free fall.



### EASY MAINTENANCE

With the unique tilting mechanism, the camera can be brought to ground level with ease, making maintenance a hassle-free experience.



### LONG LIFE

Tilt Camera Pole is built to last with hot dip galvanization and thermoplastic coating technology. This gives it a very long life and protection against corrosion, making it a perfect choice for outdoor usage.



### COLOR CUSTOMIZATION

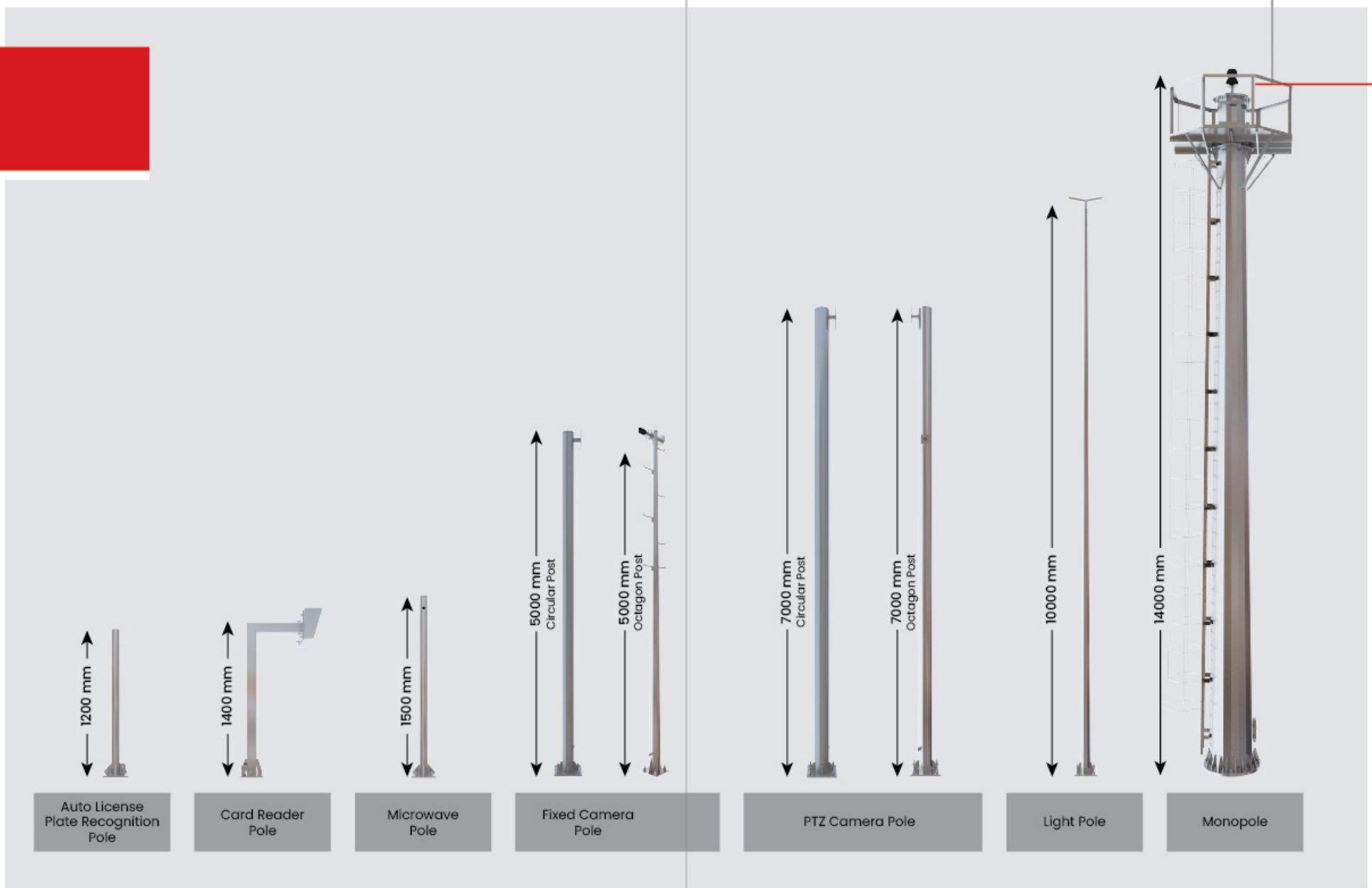
A-1's Tilt Camera Pole can be customized to match the aesthetic of your premise using Thermoplastic coating technology. Choose from colors, like black and green, to blend seamlessly with your environment.





# FIXED POLES

A-1 Fence Arabia offers a range of **Fixed Poles** designed to support various security and utility installations. These poles are engineered for **durability**, **versatility**, and **optimal performance** in outdoor environments. From mounting surveillance systems to integrating lighting and access control solutions, our **fixed poles** are built to **serve diverse applications efficiently**.



## FEATURES

**HIGH DURABILITY**  
Manufactured using robust materials to withstand extreme weather and environmental conditions

**VERSATILE DESIGN**  
Compatible with multiple security and utility devices, offering seamless integration

**CORROSION RESISTANCE**  
Coated with protective layers to ensure longevity in challenging climates

**CUSTOMIZABLE HEIGHTS**  
Available in various sizes to meet project-specific requirements

**EASY INSTALLATION**  
Designed for quick and hassle-free setup, reducing downtime





# COMPREHENSIVE PERIMETER SECURITY SOLUTIONS



A-1 Akat NG 30



A-1 Alcazar AVRB  
(Rope Barrier)



A-1 Alcazar  
Roadblocker Neo



A1 Bullet  
Guard Window



A-1 Auxiliary Gate



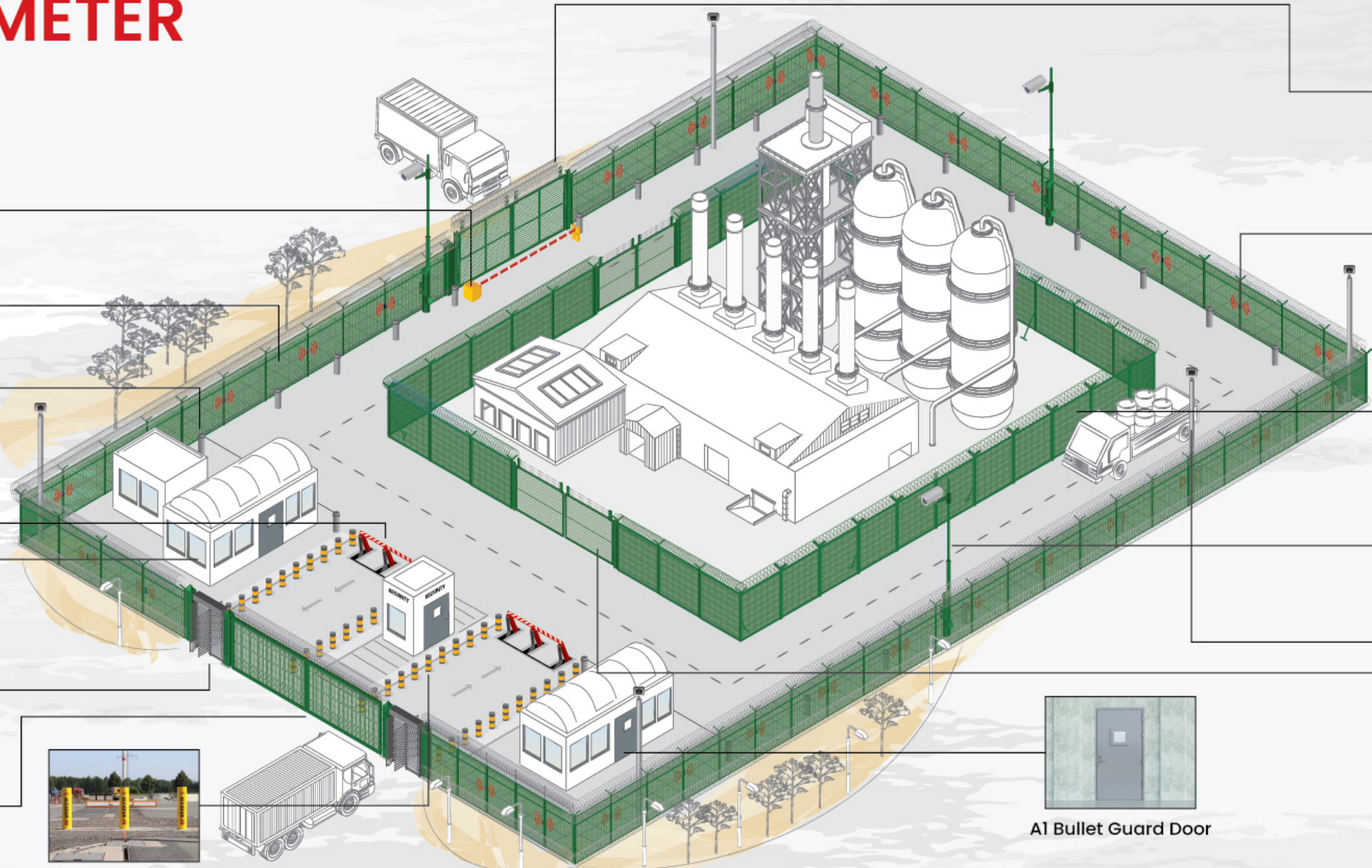
A-1 Alcazar CBB



A-1 Turnstiles



A-1 Alcazar SB



A-1 Akat Gate



Liminal-K



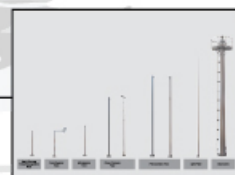
Chainlink Fence



Fensense



Tilt Camera Pole



Fixed Poles



A1 Bullet Guard Door



Swing Gate



## PROJECT GALLERY



Sadara Value Park, Jubail



380kv substation, Sudair



SWCC EIC khobar WTS, Al Khobar



SEC 380kv Substation, Marjan, Tanajib



Ma'aden Ammonia 3, Ras Al Khair



SWCC Tofie Welfiled, Jubail



SWCC Jubail Riyadh WTS



SWCC Dammam Jamiyah WTS



## HCIS PROJECT EXECUTIONS IN -



## HONORABLE CLIENTELE

### Contractors



### Integrators

